

Collaborative National Program for the Development of Performance Testing Protocols for Distributed Generation with CHP

Presented by:

Mark Hanson

October 19, 2006

Basics

- Partnership between DOE and ASERTTI
- Nationally accepted performance testing protocols for micro-turbines, reciprocating engines, small turbines and fuel cells
- National Searchable Database
- New York Databases
- Achieve widespread use of the protocols and databases to support market

Status as of September 2006

- National Searchable Database being populated, now reporting on 19 sites
- NYSERDA DG/CHP Integrated Data System reporting now reporting on 93 sites with current monitoring of 15 sites
- Laboratory, field, long-term monitoring, and case study interim protocols available for all DG systems except fuel cells
- Fuel Cell Lab Protocol is drafted and distributed to the Stakeholder Advisory Committee

Organizational Structure-1

Steering Committee of Sponsors/Representatives

California Energy Commission

Concurrent Technology Corp.

Energy Center of Wisconsin

Montana State University-Billings

National Renewable Energy Laboratory

NYSERDA

CHP Regional Application Centers

University of Illinois-Chicago/ERC

U.S. Department of Energy

Organizational Structure-2

Stakeholders Advisory Committee

- Manufacturers and distributors
- End users (owners) and operators
- Utilities, researchers including National Labs, public interest groups, and governmental including U.S. EPA

■ Subcontractors

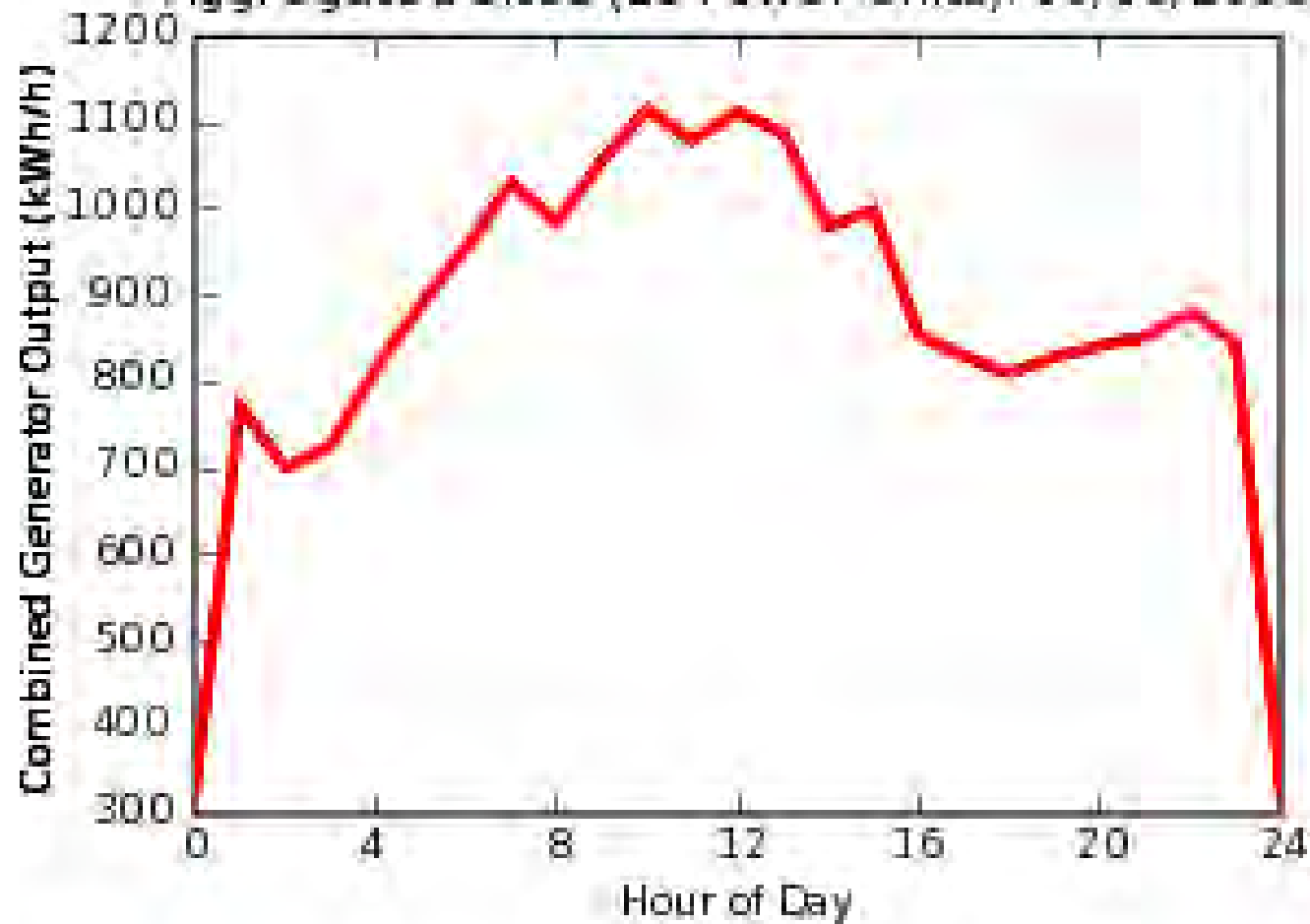
- Laboratory protocol– Gas Technology Institute w/ UL
- Field protocol– Southern Research Institute
- Case study protocol– University of Illinois at Chicago – Energy Research Center
- Long term monitoring protocol- Connected Energy Corporation

Website Access

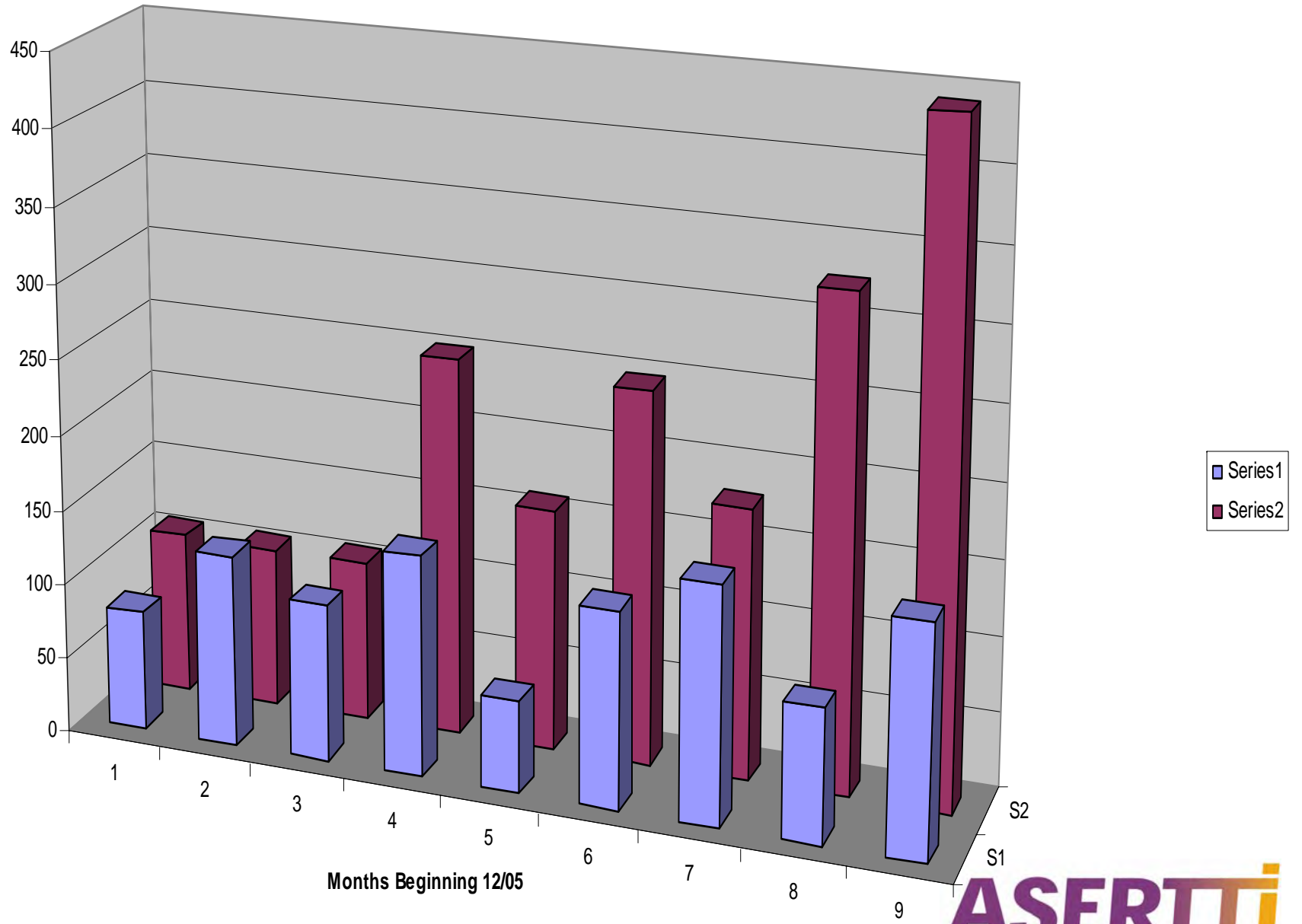
- www.dgdata.org (protocols and national database for metadata and attached reports)
- chp.nyserda.org (New York Integrated Data System)
- www.enerview.com/ny/ (New York sites being remotely monitored in real time)

New York Current Sites at chp.nyserda.org

Aggregated Sites (15 Power Units): 09/09/2006



Downloads and Unique Visits per Month



Phase 2: Issues and Activities

- Base funding established through 2008
- Expand use of protocols and reporting to databases by manufacturers and end users
- ASERTTI members and Regional Application Centers are core drivers
- Include fuel cells in Field and Long Term Monitoring Protocols
- End user confidence and acceptance of final protocols and database are critical to marketplace adoption
- Seeking more Steering Committee Members
- Database Support 2009-2015

Contacts

■ Richard Drake

NYSERDA

E-mail: rld@nyserda.org

Phone: 518-862-1090 x 3258

■ Joe Kramer

Project Director

E-mail: jkramer@ecw.org

Phone 608-238-8276 x 119

■ Mark Hanson

Associate Project Director

E-mail: MHanson@hoffman.net

Phone 608-692-1915