

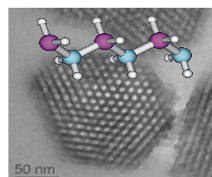
Energy Efficiency and Renewable Energy R&D at Pacific Northwest National Laboratory

Suresh Baskaran
Pacific Northwest National Laboratory
February 02, 2008



Energy Efficiency and Renewable Energy Program at Pacific Northwest National Laboratory

PNNL provides science, technology and leadership to:



- ▶ Develop and deploy advanced lighting technologies and innovative approaches to increase appliance and building efficiency
- ▶ Enable high wind penetration through advances in grid management
- ▶ Advance emissions technologies and lightweight materials to increase vehicle efficiency
- ▶ Develop advanced hydrogen and electrical storage systems
- ▶ Accelerate development of next-generation biofuels



Joint Facility to Advance Biomass Research between Washington State and Pacific Northwest National Laboratory

- ▶ Total Cost ~\$25M
- ▶ Owned by Washington State University, 53% leased by PNNL
- ▶ 57,000 ft² (31,000 ft² PNNL)
- ▶ Classrooms, Labs, Offices, Shared Space
- ▶ Washington State funded \$14M
- ▶ PNNL funded \$750K for design with \$10M for construction via lease/financing
- ▶ PNNL contributes ~\$9M in research equipment
- ▶ Washington State funded “Star Researcher” program to attract world-renowned scientist to lead BSEL

